



Legend

COUNTY BOUNDARY

CLOVIS CITY LIMITS

COUNTY ROADS

SURFACE

ASPHALT

CALICHE

CHIPSEAL

DIRT

TADD SIGNS
(TURN AROUND
DON'T DROWN)

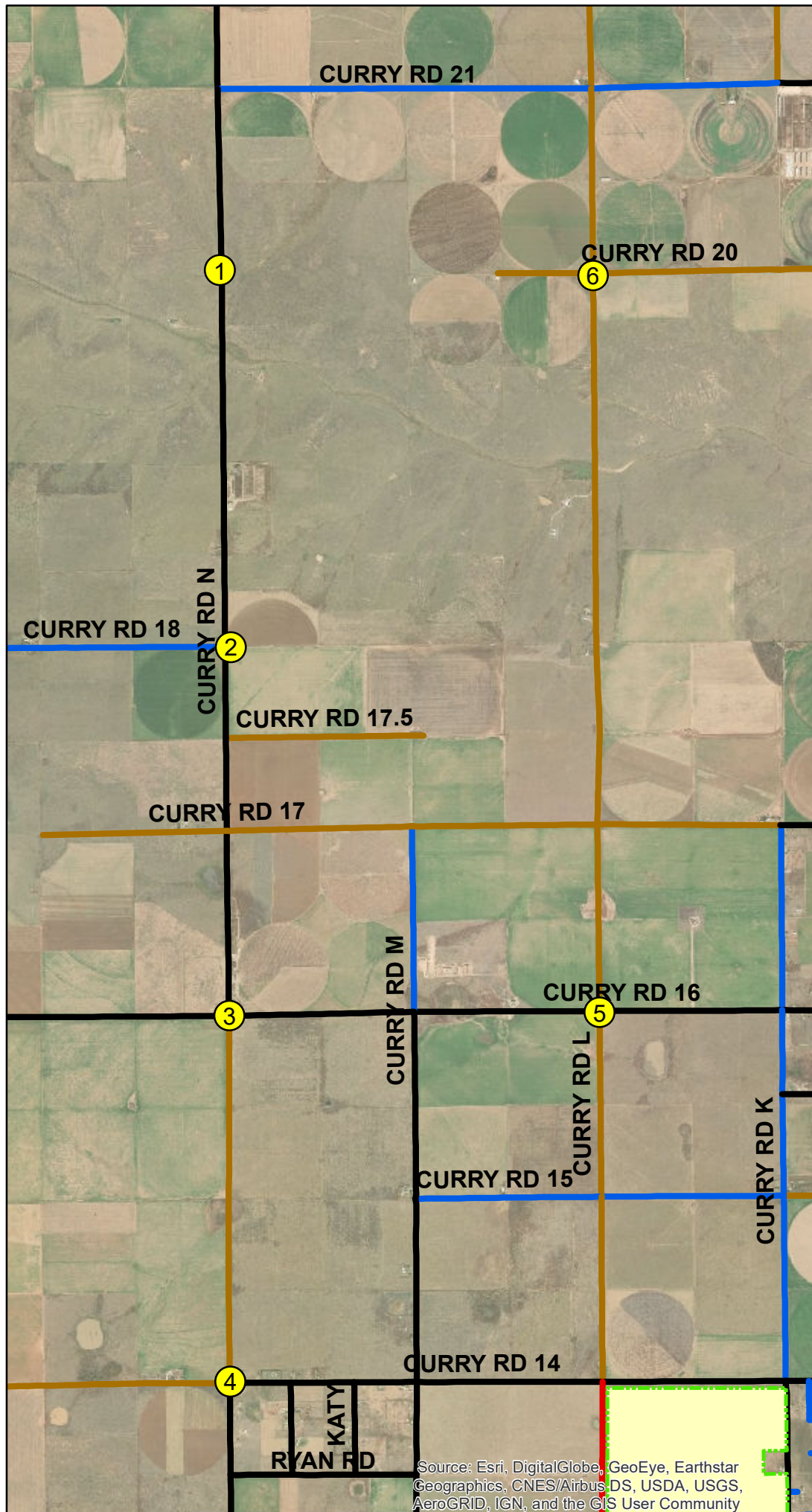
INTERSECTIONS:

1. CRN & CR20
2. CRN & CR18
3. CRN & CR16
4. CRN & CR14
5. CRL & CR16
6. CRL & CR20



0 0.25 0.5 1
Miles

Source data compiled from GIS databases by RKJ.
This map is a graphical representation of Curry County and should only be used for illustrative purposes. In no way should this map, in part or in whole, be used to settle any boundary disputes or locational conflicts.



Source: Esri, DigitalGlobe, GeoEye, Earthstar Geographics, CNES/Airbus DS, USDA, USGS, AeroGRID, IGN, and the GIS User Community



**No Picture of Sign.
Sign was Stolen shortly
after installed.
CR N & CR 16**

3



4

5



03/11/2015



03/11/2015



6



Legend

 COUNTY BOUNDARY

 CLOVIS CITY LIMITS

COUNTY ROADS


SURFACE

 ASPHALT

 CALICHE

 CHIPSEAL

 DIRT

 TADD SIGNS
(TURN AROUND
DON'T DROWN)

INTERSECTIONS:

7. CRD & CR19

8. CRD & CR18/NM 77



0 0.25 0.5 1
Miles

Source data compiled from GIS databases by RKJ.
This map is a graphical representation of Curry County and should only be used for illustrative purposes. In no way should this map, in part or in whole, be used to settle any boundary disputes or locational conflicts.

Source: Esri, DigitalGlobe, GeoEye, Earthstar Geographics, CNES/Airbus DS, USDA, USGS, AeroGRID, IGN, and the GIS User Community

